

NOTES:

1. INSTALLATION SHALL COMPLY WITH ALL APPLICABLE NATIONAL AND LOCAL ELECTRICAL REGULATIONS.
2. REFER TO PRODUCT DOCUMENTATION FOR ADDITIONAL DETAILS PRIOR TO INSTALLATION AND SITE PREPARATION WORK.
3. ALL DIMENSIONS ARE IN MILLIMETERS [INCHES].
4. FRONT/REAR/SIDE/TOP SERVICE, VENTILATION CLEARANCE REQUIRED. CONSULT WITH THE LOCAL SAFETY CODES AND STANDARDS FOR ANY ADDITIONAL REQUIREMENTS OF LOCAL AREA.
5. COLOR: RAL 9003.
6. PROTECTION CLASS: IP20.
7. OPERATING TEMPERATURE: 0°C TO 40°C [32°F TO 104°F].

THIS DRAWING AND SPECIFICATIONS HEREIN ARE THE PROPERTY OF SCHNEIDER ELECTRIC AND SHALL NOT BE COPIED, REPRODUCED OR USED IN WHOLE OR IN PART, AS THE BASIS FOR THE MANUFACTURE OR SALE OF ITEMS WITHOUT WRITTEN PERMISSION FROM SCHNEIDER ELECTRIC. THIS DRAWING IS BASED UPON LATEST AVAILABLE INFORMATION AND IS SUBJECT TO CHANGE WITHOUT NOTICE.

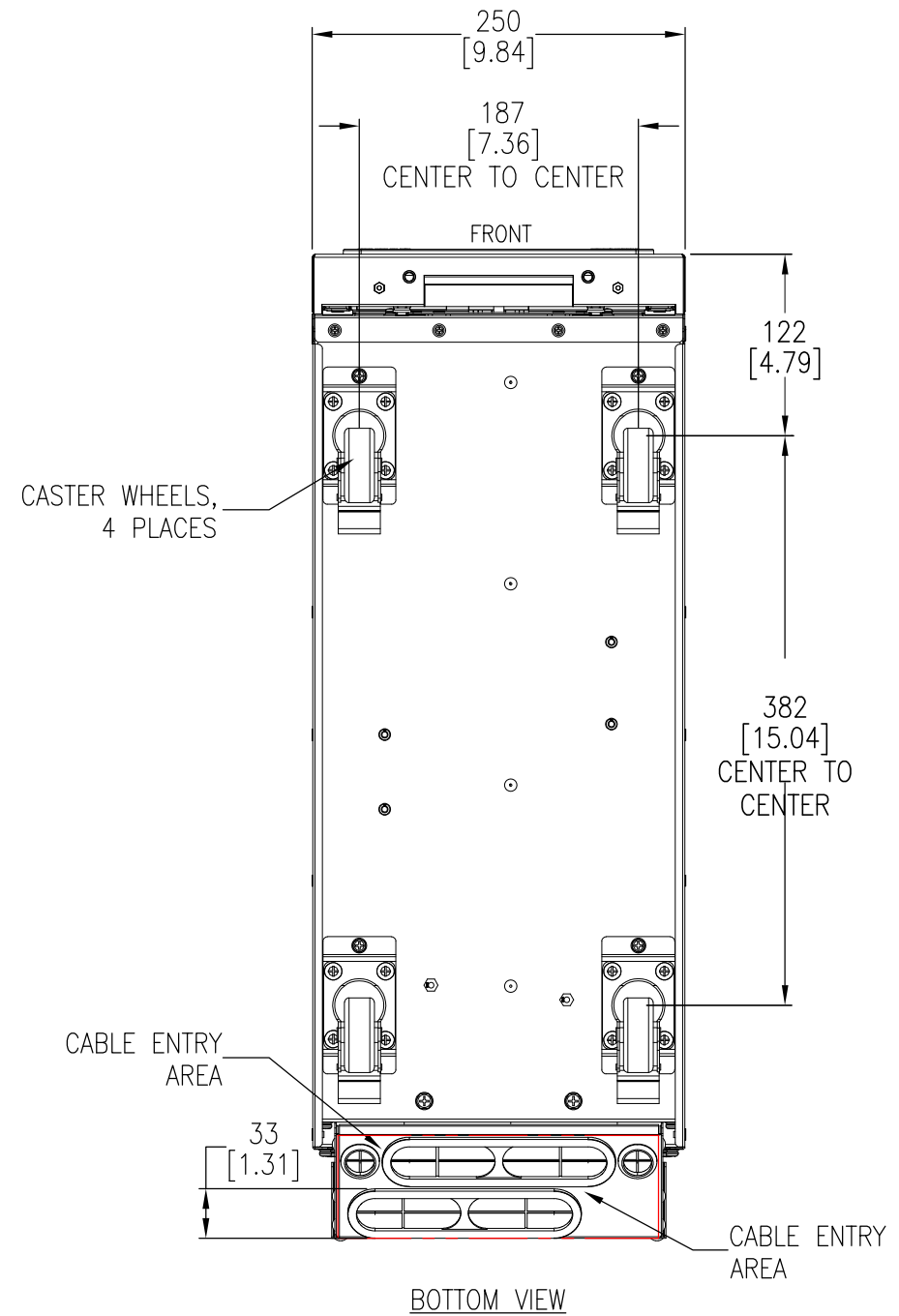
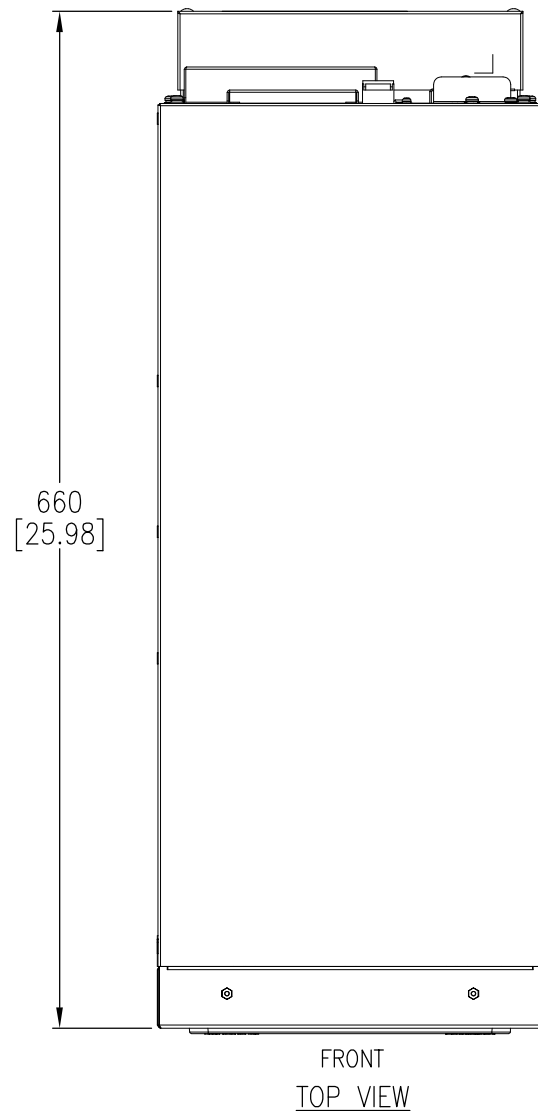


TITLE:
EASY UPS 3S PRO
10 - 20KVA, 400V, 3PH IN 1PH OUT
WITHOUT BATTERY MODULES
GENERAL ARRANGEMENT
PROJECT: SUBMITTAL DRAWINGS SHEET 1 OF 4

DWG NO: E3SP10K2031
DRAWN: TRASSIA
ENGINEER: YAPING YANG
APPROVED: DAVE DONG

REV. 0
30-APR-26
30-APR-26
FIRST ANGLE PROJECTION

SKU NUMBER	NET WEIGHT IN kg [lb]	CENTER OF GRAVITY IN mm [inches]		
		X-Distance	Y-Distance	Z-Distance
E3SP10K3I	35 [77.2]	125 [4.92]	236 [9.29]	289.8 [11.4]
E3SP15K3I	38 [83.8]			
E3SP20K3I	41 [90.4]			



- NOTES:**
1. INSTALLATION SHALL COMPLY WITH ALL APPLICABLE NATIONAL AND LOCAL ELECTRICAL REGULATIONS.
 2. REFER TO PRODUCT DOCUMENTATION FOR ADDITIONAL DETAILS PRIOR TO INSTALLATION AND SITE PREPARATION WORK.
 3. ALL DIMENSIONS ARE IN MILLIMETERS [INCHES].

THIS DRAWING AND SPECIFICATIONS HEREIN ARE THE PROPERTY OF SCHNEIDER ELECTRIC AND SHALL NOT BE COPIED, REPRODUCED OR USED IN WHOLE OR IN PART, AS THE BASIS FOR THE MANUFACTURE OR SALE OF ITEMS WITHOUT WRITTEN PERMISSION FROM SCHNEIDER ELECTRIC. THIS DRAWING IS BASED UPON LATEST AVAILABLE INFORMATION AND IS SUBJECT TO CHANGE WITHOUT NOTICE.

Schneider
Electric

TITLE:
EASY UPS 3S PRO
10 - 20KVA, 400V, 3PH IN 1PH OUT
WITHOUT BATTERY MODULES
TOP & BOTTOM VIEWS

PROJECT: SUBMITTAL DRAWINGS SHEET 2 OF 4

DWG NO: E3SP10K2031

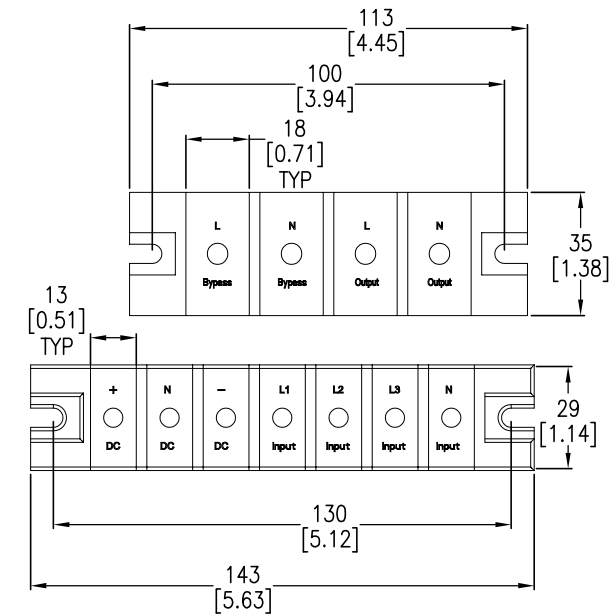
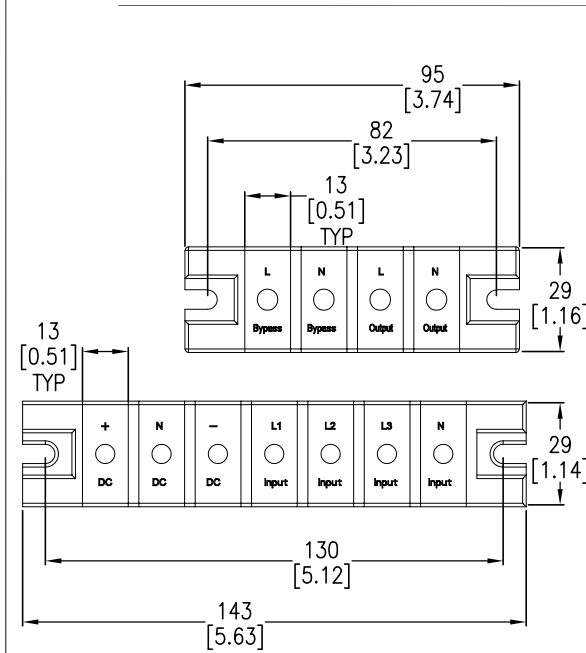
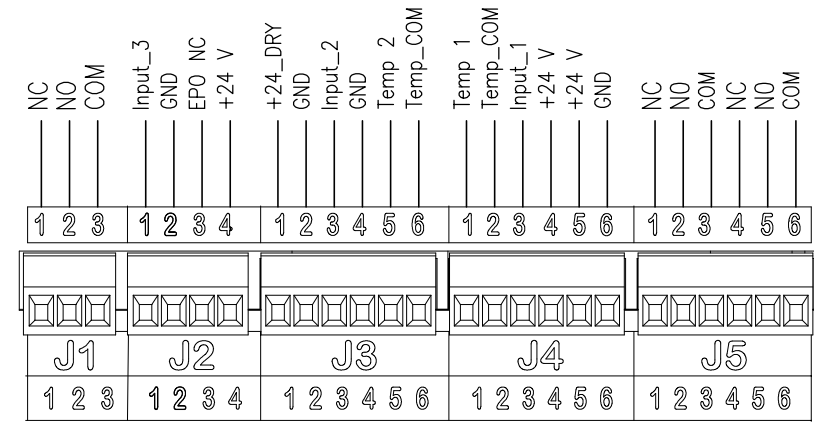
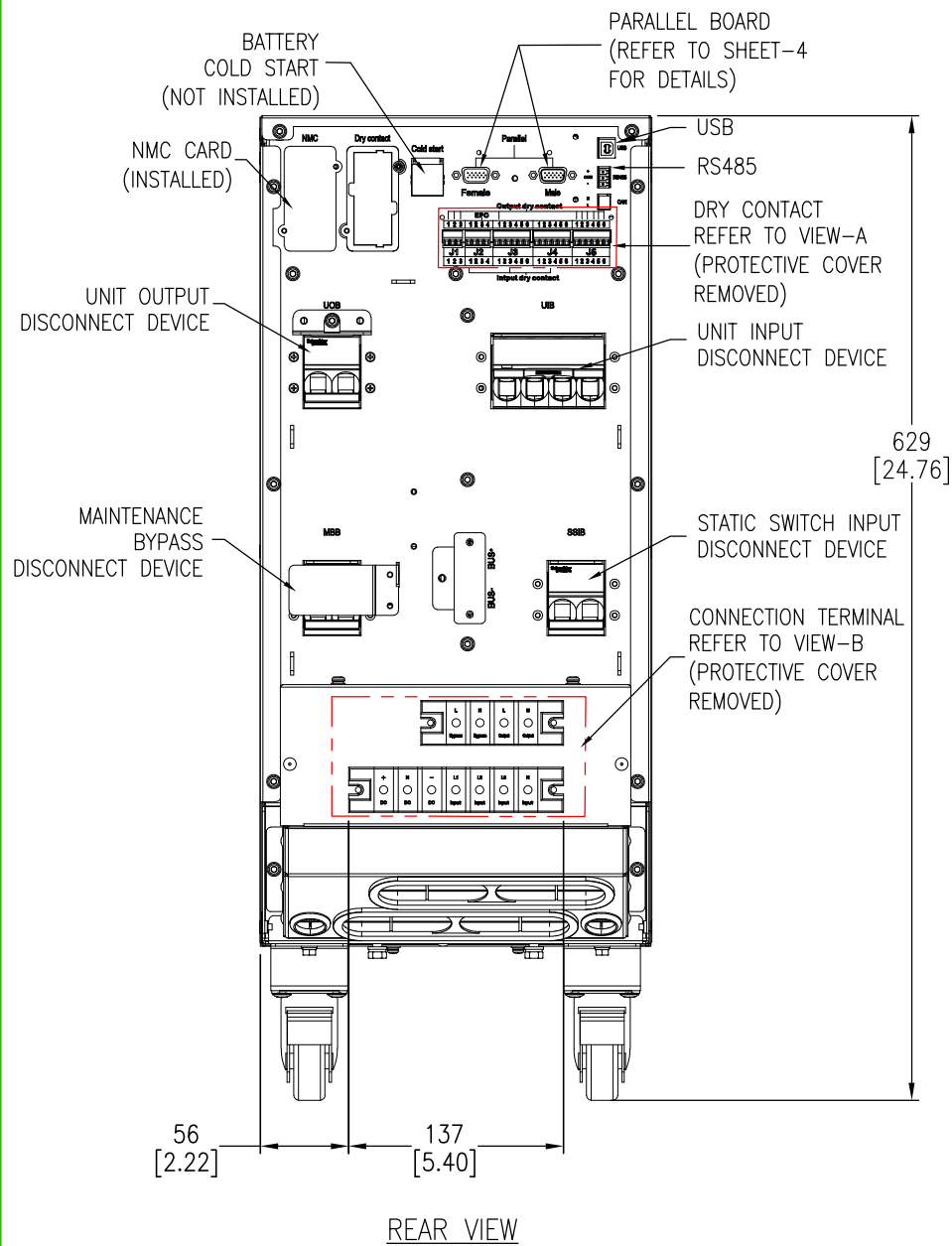
DRAWN: TRASSIA 30-APR-26

ENGINEER: YAPING YANG 30-APR-26

APPROVED: DAVE DONG 30-APR-26

REV. 0

FIRST
ANGLE
PROJECTION



- NOTES:**
1. INSTALLATION SHALL COMPLY WITH ALL APPLICABLE NATIONAL AND LOCAL ELECTRICAL REGULATIONS.
 2. REFER TO PRODUCT DOCUMENTATION FOR ADDITIONAL DETAILS PRIOR TO INSTALLATION AND SITE PREPARATION WORK.
 3. ALL DIMENSIONS ARE IN MILLIMETERS [INCHES].

THIS DRAWING AND SPECIFICATIONS HEREIN ARE THE PROPERTY OF SCHNEIDER ELECTRIC AND SHALL NOT BE COPIED, REPRODUCED OR USED IN WHOLE OR IN PART, AS THE BASIS FOR THE MANUFACTURE OR SALE OF ITEMS WITHOUT WRITTEN PERMISSION FROM SCHNEIDER ELECTRIC. THIS DRAWING IS BASED UPON LATEST AVAILABLE INFORMATION AND IS SUBJECT TO CHANGE WITHOUT NOTICE.

Schneider Electric

TITLE:
EASY UPS 3S PRO
10 - 20KVA, 400V, 3PH IN 1PH OUT
WITHOUT BATTERY MODULES
REAR VIEWS

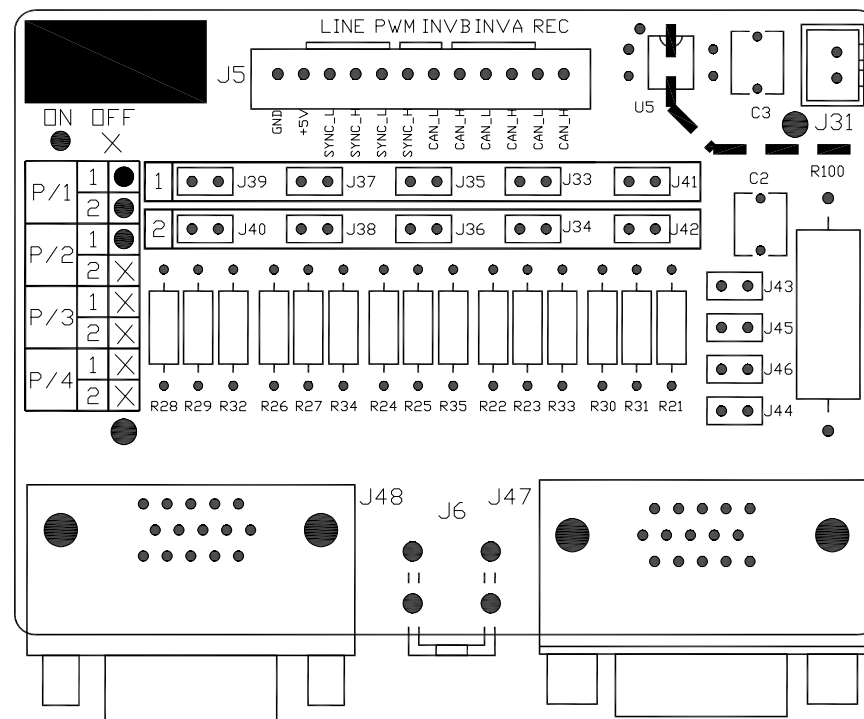
PROJECT: SUBMITTAL DRAWINGS **SHEET 3 OF 4**

DWG NO: E3SP10K2031 **REV.** 0

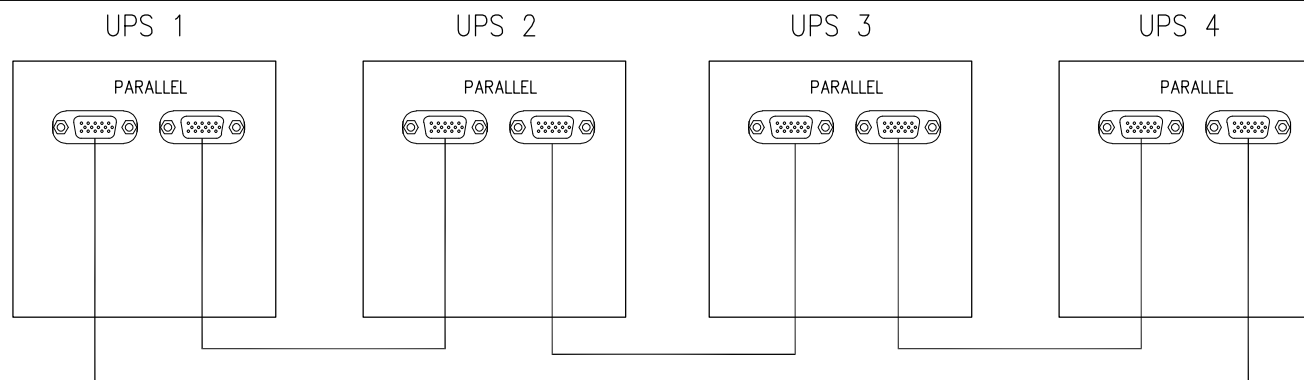
DRAWN: TRASSIA **30-APR-26** **FIRST**

ENGINEER: YAPING YANG **30-APR-26** **ANGLE**

APPROVED: DAVE DONG **30-APR-26** **PROJECTION**



4 PARALLEL BOARD



PARALLEL CONNECTION

NOTES:

1. INSTALLATION SHALL COMPLY WITH ALL APPLICABLE NATIONAL AND LOCAL ELECTRICAL REGULATIONS.
2. REFER TO PRODUCT DOCUMENTATION FOR ADDITIONAL DETAILS PRIOR TO INSTALLATION AND SITE PREPARATION WORK.
3. UP TO 4 NUMBERS OF UPS CAN BE CONNECTED IN PARALLEL. MAXIMUM COMMUNICATION CABLE LENGTH IS 5 Meters.

△ PARALLEL BOARD SETTINGS:

REMOVE JUMPERS FROM THE PARALLEL BOARD ACCORDING TO YOUR SYSTEM:

- a. IN PARALLEL SYSTEM WITH TWO UPSs, REMOVE JUMPERS FROM J34, J36, J38, J40 AND J42 ON BOTH BOARDS
- b. IN PARALLEL SYSTEMS WITH THREE OR FOUR UPS, REMOVE THE JUMPERS FROM J33, J34, J35, J36, J37, J38, J39, J40, J41, J42 ON ALL PARALLEL BOARDS.

THIS DRAWING AND SPECIFICATIONS HEREIN ARE THE PROPERTY OF SCHNEIDER ELECTRIC AND SHALL NOT BE COPIED, REPRODUCED OR USED IN WHOLE OR IN PART, AS THE BASIS FOR THE MANUFACTURE OR SALE OF ITEMS WITHOUT WRITTEN PERMISSION FROM SCHNEIDER ELECTRIC. THIS DRAWING IS BASED UPON LATEST AVAILABLE INFORMATION AND IS SUBJECT TO CHANGE WITHOUT NOTICE.

Schneider Electric

TITLE:
EASY UPS 3S PRO
10 - 20KVA, 400V, 3PH IN 1PH OUT
WITHOUT BATTERY MODULES
PARALLEL CONNECTION

PROJECT: SUBMITTAL DRAWINGS SHEET 4 OF 4

DWG NO:	E3SP10K2031		REV.	0
DRAWN:	TRASSIA	30-APR-26	FIRST	ANGLE
ENGINEER:	YAPING YANG	30-APR-26	APPROVED:	DAVE DONG
		30-APR-26		PROJECTION